

# Applications

## Most Preferred Choice for Motive Applications



**Industrial Forklifts and Pallet Trucks**  
(Logistics, warehousing and manufacturing plants)

**Big Warehouses**  
(Where the maintenance cost of watering the batteries is a significant part of their overall operating costs)



**Ground Support Equipment**  
(Airports, cargo loading, ground transportation)

**Automated Guided Vehicles**  
(Manufacturing plants)

**Floor Cleaning Machines**

Available as complete batteries with various voltages ranging from 12V to 120V

Cells available in plates

**125Ah and 155Ah**

Capacity range

**250Ah - 1550Ah**

**SUNLIGHT**  
POWER IS KNOWLEDGE

**#1**  
plant worldwide with dynamic production of motive power and storage energy

**500+**  
clients in 130 countries

**Quality & Safety**  
in every step of the production lines

**Innovation**  
based on experience



GREECE | ITALY | ROMANIA | USA

Contact us: [empowerfuture@sunlight.gr](mailto:empowerfuture@sunlight.gr)

Headquarters Greece T: +30 210 6245400

European Battery Assembly (SEBA)

& Sunlight Italy T: +39 045 7651771

Industrial SRL Romania T: +40 021 351 77 77

Sunlight Batteries USA Inc. T: +1 336 579-5109

[www.systems-sunlight.com](http://www.systems-sunlight.com)



MP-16 EU-US 1.21

Sunlight Group Energy Storage Systems reserves the right to change or revise without notice any information or detail given in this publication



**SUNLIGHT**  
POWER IS KNOWLEDGE  
**Hydrosave**

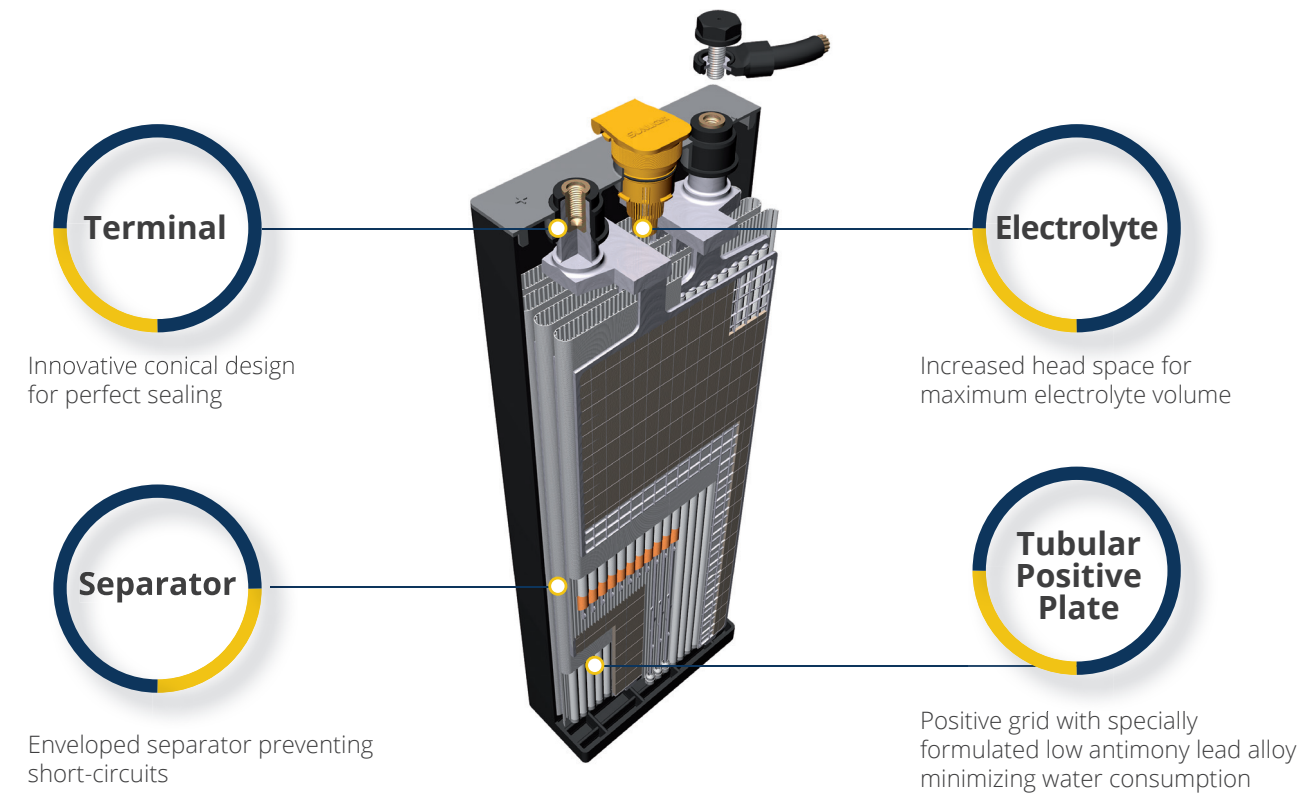
**Innovation**  
Energy • Data

**SUNLIGHT**  
POWER IS KNOWLEDGE

## Sunlight HydroSave Cell

Do your operations require a low-maintenance solution?

With HydroSave you get up to **13 weeks intervals between watering!** Tested and proven under the toughest conditions.



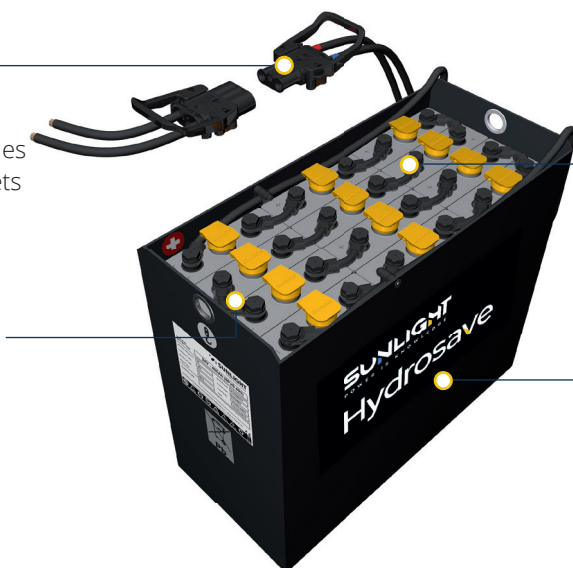
## Complete Battery Highlights

### Exit Cables & Battery Sockets

Insulated color marked exit cables with both types of battery sockets (DIN & Flat pole)

### Inter-cell Connectors

Flexible bolt-on connectors for fast and easy cell replacement



### Bolts

Plastic-head bolts with voltage measurement point

### Tray

Wide variety of sizes and colors with plastic powder coating

## Sunlight HydroSave Battery

### Long Lasting Superior Performance

Minimal Maintenance Cost

Long Watering Intervals up to 13 Weeks

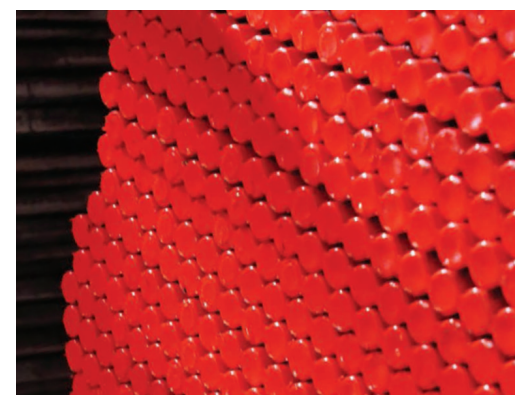
Minimized Water Consumption

High Cycle Life

### ADVANTAGES OF HYDROSAVE

Reduced Expected Repair Costs

## The Red Lead Advantage



**99.99%** pure lead for Red Lead production

**100%** plates weight control and data statistical evaluation

**100%** Red Lead in our positive plates through dry filling process

**Low Mass Shedding** through uniform filling of all tubes across the whole length

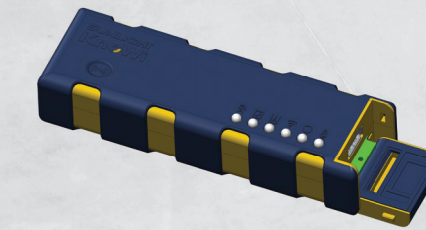
**Full Capacity** within the first 3-5 cycles

## Battery Monitoring System

The more data you know, the smarter you go!

**Knowi**  
SMART DATA MANAGEMENT

Innovative & Advanced Battery Monitoring System



**Protection** of your equipment

**Maximization** of battery service life

**Reduced service** and maintenance costs

**Reduced downtime**

**Local and remote monitoring** of batteries and forklifts from everywhere around the world

## Main BMS features

**SUNLIGHT**  
POWER IS KNOWLEDGE



**GLocal**  
Battery Intelligence

- Real time monitoring
- Stand-alone Wi-Fi and GSM connectivity without extra hubs/gateways
- Battery Profiles and Forklift Profiles always live and active
- Entire fleet management both for Lead Acid and Lithium batteries through Sunlight GLocal cloud management system
- Advanced AI/Machine Learning algorithm proposals for replacement of Sunlight Lead-acid Batteries with Sunlight Lithium Batteries

